

\$639,000 - #2009 -285 ENFIELD PL

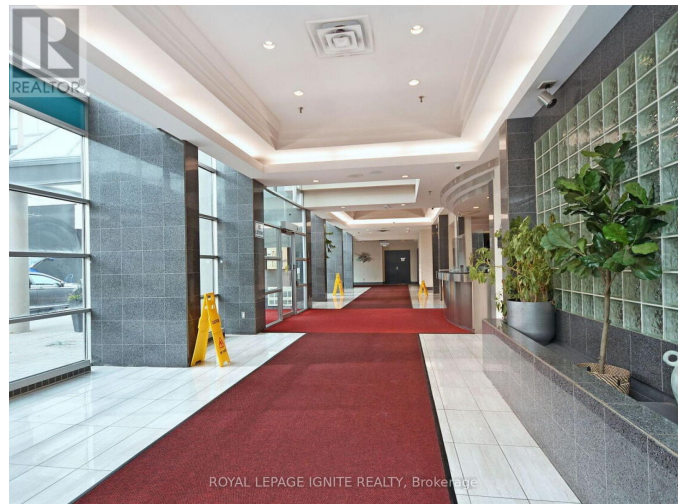
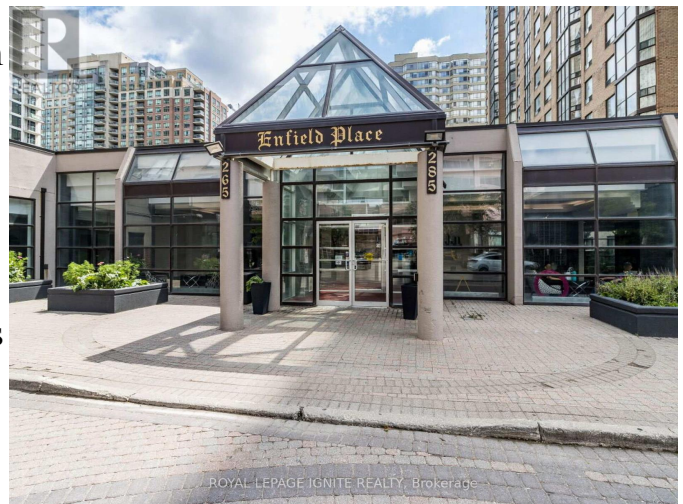
Listing ID: W8224622

\$639,000

3 Bedrooms, 2 Bathrooms Single Family

#2009 -285 ENFIELD PL, Mississauga,
Ontario, L5B3Y6

Welcome to your new home in Square One! Featuring a sun-lit ~900 sq ft corner unit, floor-to-ceiling windows, with a clear view of the city skyline, 2 bedrooms & a solarium big enough to be a BR, large open-concept living and dining areas and a gorgeous tiled floor that brightens the space even more. What's more? The condo fees of \$620 includes *all* utilities, cable AND internet! Replete with amenities, the building features 24hr concierge, indoor pool, sauna, gym, games room, party room, tennis & squash courts and more! Stepping out, the neighbourhood welcomes you to the SQ1 Mall, library, YMCA, Living Arts Centre, Kariya Park, TONS of shopping, restaurants. Public transit steps away, 403, 401, QEW, Cooksville GO just a few mins drive & upcoming LRT. All this and more at \$700/sq ft, what are you waiting for? Come & Start Living! **** EXTRAS **** Check out the amazing amenities & condo fees with EVERYTHING INCLUDED - all utilities + Bell FibeTV & High speed fibre internet! Indoor pool, gym, party/meeting room, tennis court,sauna,visitor parking, concierge, ready to move and enjoy! (id:54154)



\$639,000 - #2009 -285 ENFIELD PL

Listing Office:ROYAL LEPAGE IGNITE REALTY