

\$639,000 - 908 - 265 ENFIELD PLACE

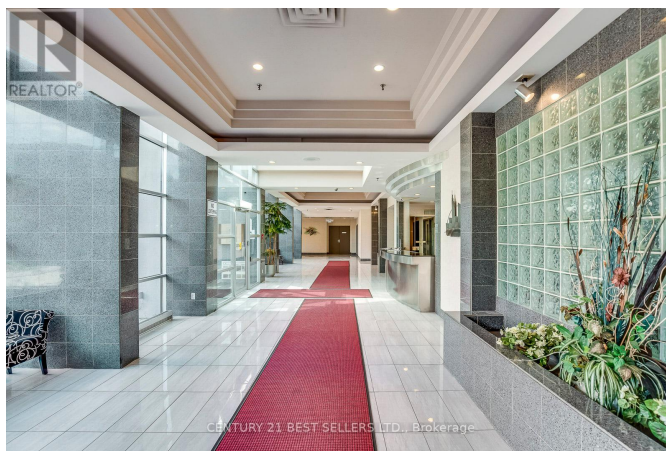
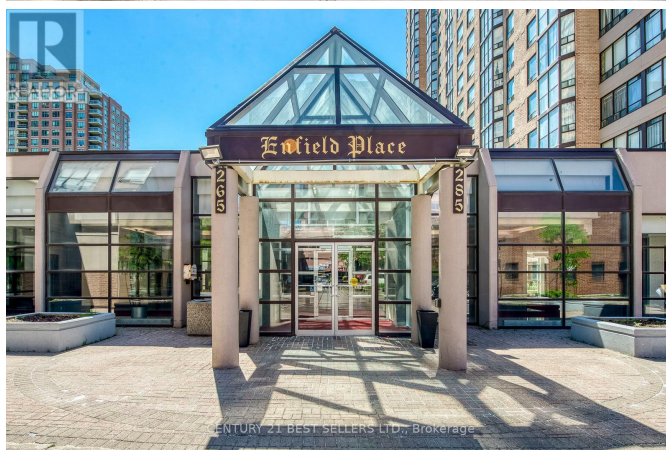
Listing ID: W8223846

\$639,000

3 Bedrooms, 2 Bathrooms Single Family

908 - 265 ENFIELD PLACE, Mississauga, Ontario, L5B3Y7

Bright and spacious open concept condo with 2 bedrooms plus solarium/den, 2 full baths, located in the heart of the Mississauga Square One area. Modern kitchen with granite counter tops, breakfast bar & pot lights. NEW Stainless steel appliances in kitchen. Upgraded laminate & porcelain tile flooring throughout the condo. Large open concept combined living & dining room, with solarium. Bright solarium perfect for den or extended living space or 3rd bedroom. Large master bedroom with walk-in closet & 4-piece ensuite. Ensuite laundry with a stacked washer/dryer. Large windows provide great natural light. Ideal location!! Walking distance to Square One shopping mall, movie theater, restaurants, Celebration Square & Kariya Park. Close to University of Toronto (UTM) and Sheridan College. Easy access to 403/401/407, public transit & so much more. **** EXTRAS **** Stainless-steel appliance fridge, stove, dishwasher, range hood, Stackable washer/dryer all light fixtures, window coverings 1 parking & 1 Locker. Very low all-inclusive condo maintenance fees includes all utilities & Fibe TV/Internet. (id:54154)



\$639,000 - 908 - 265 ENFIELD PLACE

Listing Office:CENTURY 21 BEST SELLERS LTD.