

\$2300.00 / Monthly - #811 -220 MISSINNIHE WAY

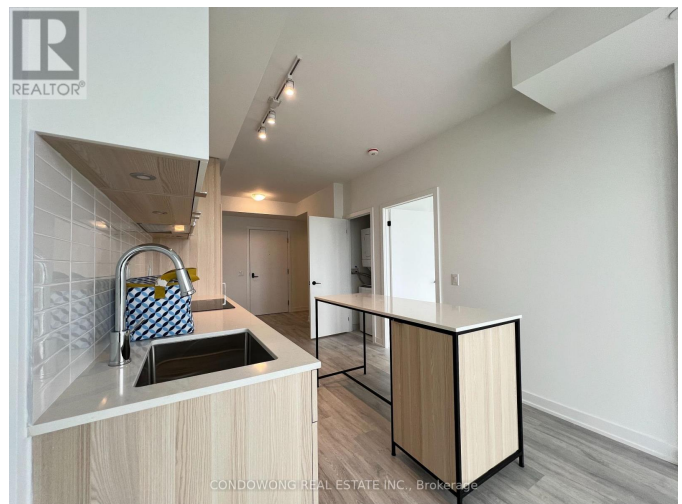
Listing ID: W8222756

\$2300.00 / Monthly

2 Bedrooms, 1 Bathrooms Single Family

#811 -220 MISSINNIHE WAY,
Mississauga, Ontario, L5H0A9

South Facing 1+1 Unit with Unobstructed Lake View! Parking & Locker Included. Sleek and Modern Kitchen w/ Built-In Island & Integrated appliances. Steps to The Waterfront Trail With Breathtaking Views Of Lake Ontario Luxury Resort Style Living In The Heart Of Port Credit, Close to Highways, Shopping & Dining, Waterfront Trails, Minutes to GO train & Public Transit Systems. **** EXTRAS **** Parking & Locker Included (id:54154)



MLS®, REALTOR®, and the associated logos are trademarks of The Canadian Real Estate Association
Data Provided by: Toronto Regional Real Estate Board
Last Modified: 11/04/2024 01:25:47 AM
Listing Office:CONDOWONG REAL ESTATE INC.