

\$1,419,000 - 2903 - 35 KINGSBRIDGE GARDEN CIRCLE

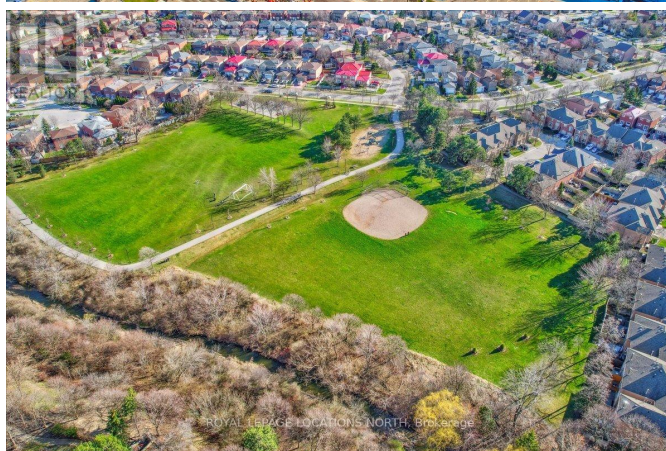
Listing ID: W8219674

\$1,419,000

2 Bedrooms, 3 BathroomsSingle Family

2903 - 35 KINGSBRIDGE GARDEN
CIRCLE, Mississauga, Ontario, L5R3Z5

Welcome to five-star living at Tridel Skymark West, boasting 34 levels of luxury living that features a multitude of recreational amenities including a 30,000 sq. ft rec center, bowling alley, indoor heated pool, gym, library, billiards, golf center, outdoor tennis courts, squash courts, meeting/party rooms as well as shopping close by. Private guest rooms are available for your loved ones when they visit. This stunning 2168sq. ft. executive suite is situated to receive plenty of light and overlooks both the Mississauga and Toronto skyline. The high-end finishes include granite and hardwood flooring, Milette doors, custom designed kitchen, 9ft ceilings, recessed valance ceiling and exquisite light fixtures. Primary suite features a walkout balcony and multiple walk-in closets, a second bedroom with custom built shelving and a 3-piece bath. The spacious study with custom built shelving and walk-out balcony may easily be converted into a guest room. The featured dual-aspect fireplace offers warmth and an aesthetically appealing atmosphere in the living room and the separate dining room. Imagine enjoying life in your sanctuary with everything you need at your fingertips! **** EXTRAS **** Gas BBQ hookup, east facing. Award winning Tridel design. 30,000 sq ft rec center, indoor



\$1,419,000 - 2903 - 35 KINGSBRIDGE GARDEN CIRCLE

golf, library, billiards, bowling, meeting
room, party room, pool, gym, guest suites,
outdoor tennis, squash courts, concierge, 24
hour security (id:54154)

MLS®, REALTOR®, and the associated logos are trademarks of The Canadian Real Estate Association
Data Provided by: Toronto Regional Real Estate Board
Last Modified: 14/05/2024 12:17:53 AM
Listing Office:ROYAL LEPAGE LOCATIONS NORTH