

\$699,000 - 1905 - 365 PRINCE OF WALES DRIVE

Listing ID: W8196900

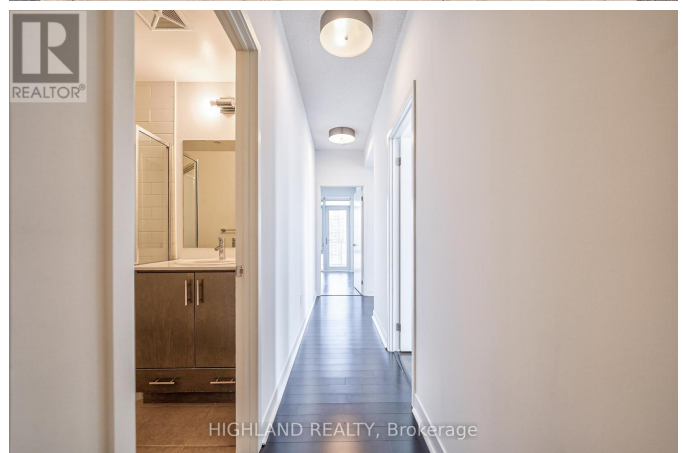
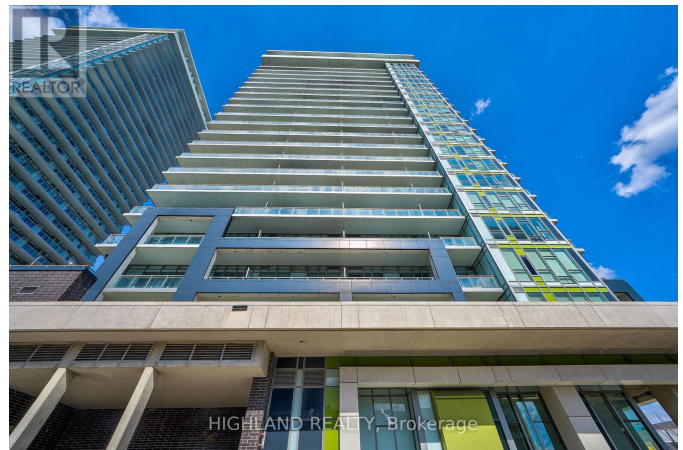
\$699,000

2 Bedrooms, 2 Bathrooms Single Family

1905 - 365 PRINCE OF WALES DRIVE,
Mississauga, Ontario, L5B0G6

**** Breathtaking Unobstructed Views ****

Gorgeous Corner Unit(2 Bedrooms & 2 Full Bathrooms) in Limelight Condo Located At Downtown Mississauga. Open-Concept Interior Design. Floor to Ceiling Windows on Entire Two Walls of Living Room With Plenty of Natural Sunlight Coming Through. Modern Style Kitchen Features S/S Appliances and A large Central Island. Spacious Master Bedroom W/ A 4pcs Ensuite and A Large Closet. Walk To Square One Shopping Mall, Sheridan College, Mississauga Transit Terminal, Restaurants, City Hall, The Living Arts Centre & More. **** EXTRAS **** One Underground Parking and One Locker Included (id:54154)



MLS®, REALTOR®, and the associated logos are trademarks of The Canadian Real Estate Association

Data Provided by: Toronto Regional Real Estate Board

Last Modified: 09/07/2024 12:01:58 AM

Listing Office:HIGHLAND REALTY