

\$684,900 - #1602 -50 ELM DR E

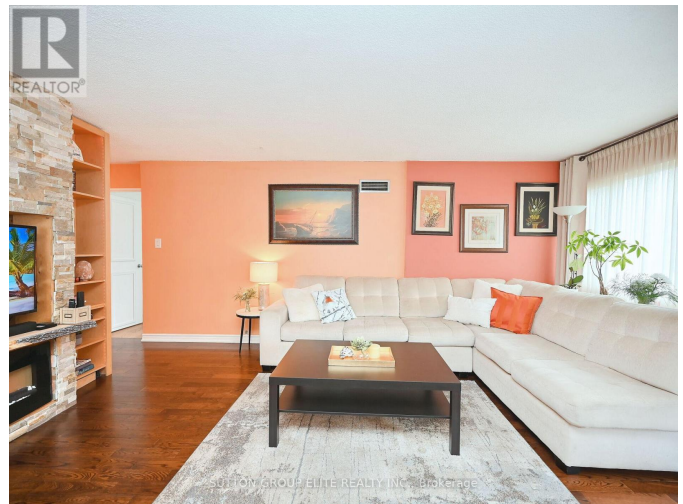
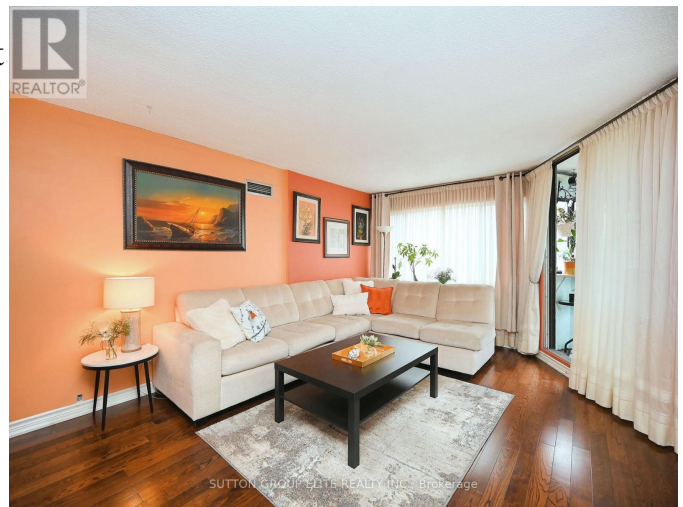
Listing ID: W8179508

\$684,900

3 Bedrooms, 2 Bathrooms Single Family

#1602 -50 ELM DR E, Mississauga,
Ontario, L5A3X2

Mississauga downtown finest ! Corner unit, with gorgeous 270deg views of Mississauga skyline and the Lake. Spacious 3 bedroom, 2 full washrooms, 2 parking, offering almost 1400sft of tastefully decorated living space. Hardwood floors thru ought, updated kitchen and bathrooms. Custom built entertainment unit, hosting classy electric fireplace/ TV and ample shelving; Custom built king size bedroom in primary, custom built closet in 2 bedroom, custom built Murphy bed in 3rd bedroom; Plenty of storage in the laundry with custom build shelving; Enclosed balcony w/custom built sofa; Don't forget 2 parking spaces plus large locker located close to the entrance for added convenience **** EXTRAS **** Ideal location with just steps to grocery, Shoppers Drugmart , public transit, just minutes to SQ1; School bus at the front (id:54154)



MLS®, REALTOR®, and the associated logos are trademarks of The Canadian Real Estate Association

Data Provided by: Toronto Regional Real Estate Board

Last Modified: 09/04/2024 11:26:43 AM

Listing Office: SUTTON GROUP ELITE REALTY INC.