

\$3850.00 / Monthly - #TH 130 -8 NAHANI WAY

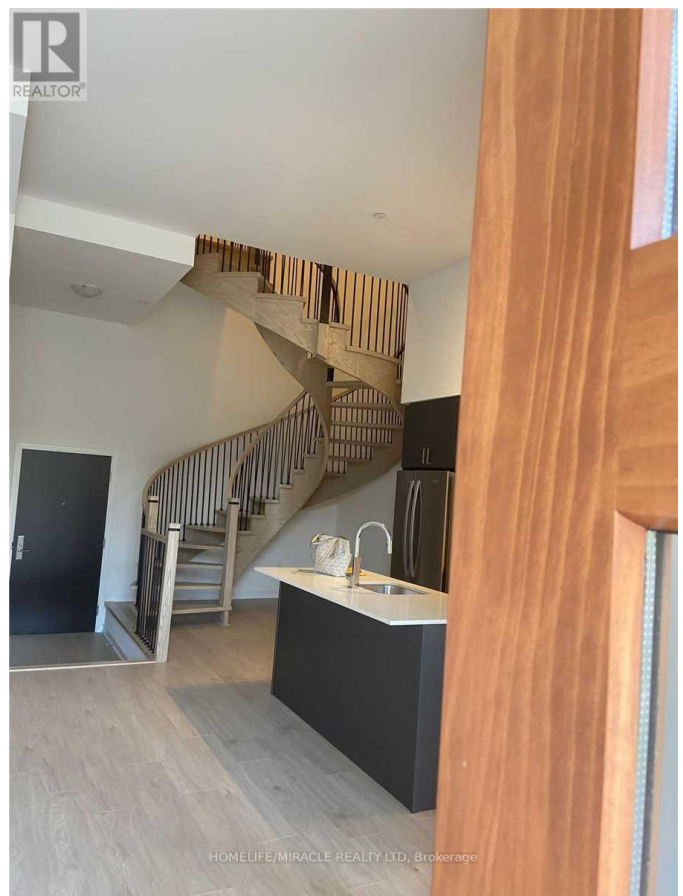
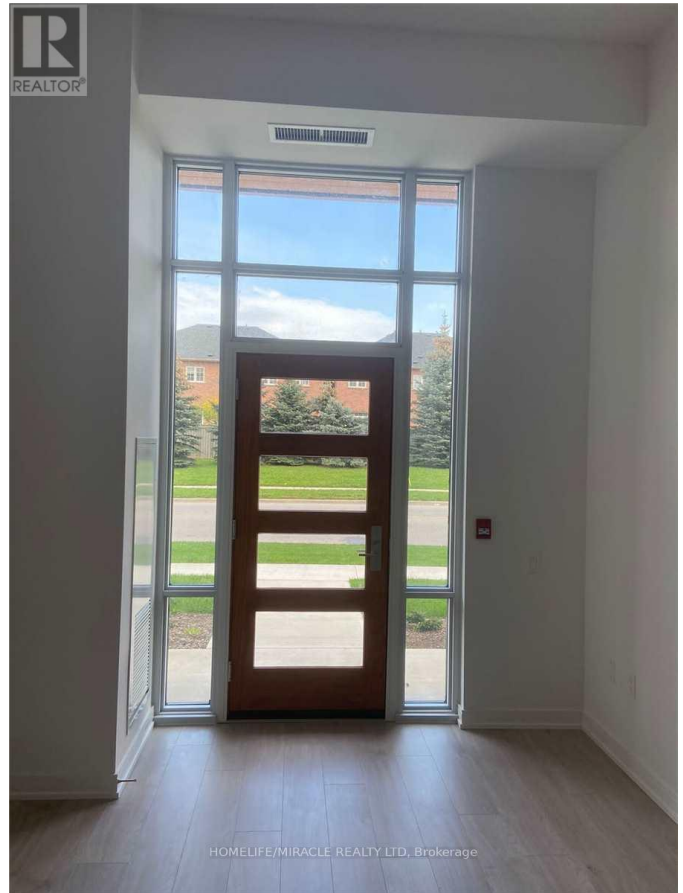
Listing ID: W8167502

\$3850.00 / Monthly

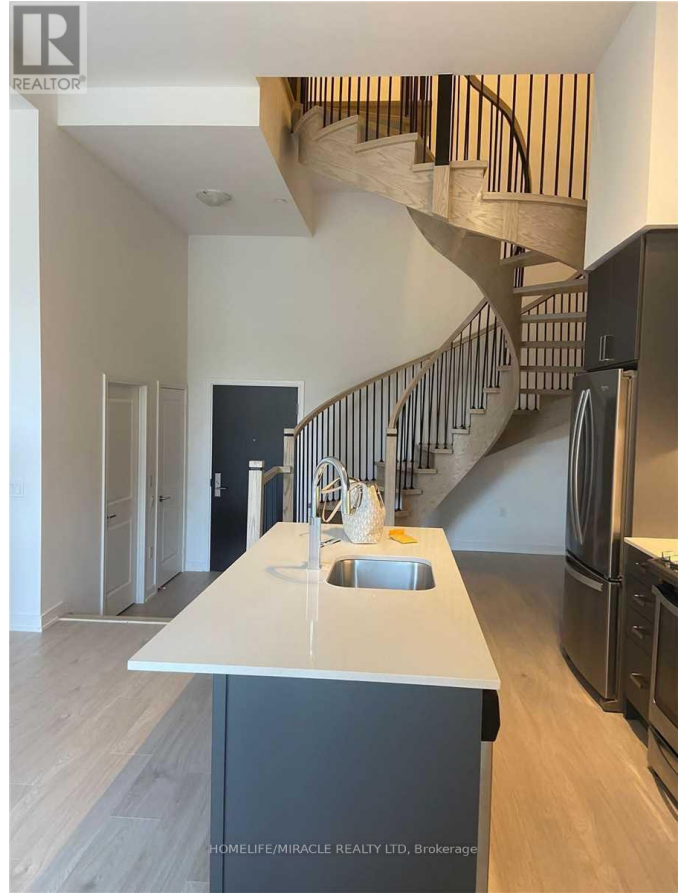
4 Bedrooms, 3 Bathrooms Single Family

#TH 130 -8 NAHANI WAY, Mississauga,
Ontario, L4Z4J8

3 Bedroom Plus Den Townhouse With
Balcony On 2nd Floor. 13Ft Ceilings On
The Main Floor. 1 Underground Parking
Included. This Unit Has Laminate Flooring,
Stainless Steel Appliances, Quartz
Countertop, Master Bedroom With Walk In
Closet, Ensuite And Balcony. Location
Close To Square One, Sheridan College,
Central Library, Go Station, Close All
Highways. Luxurious Building Amenities
Include A Fitness Centre, Yoga, Studio,
Party Room (id:54154)



\$3850.00 / Monthly - #TH 130 -8 NAHANI WAY



MLS®, REALTOR®, and the associated logos are trademarks of The Canadian Real Estate Association

Data Provided by: Toronto Regional Real Estate Board

Last Modified: 03/04/2024 01:00:44 AM

Listing Office:HOMELIFE/MIRACLE REALTY LTD