

# \$3000.00 / Monthly - #507 -36 ELM DR W

## Listing ID: W8130928

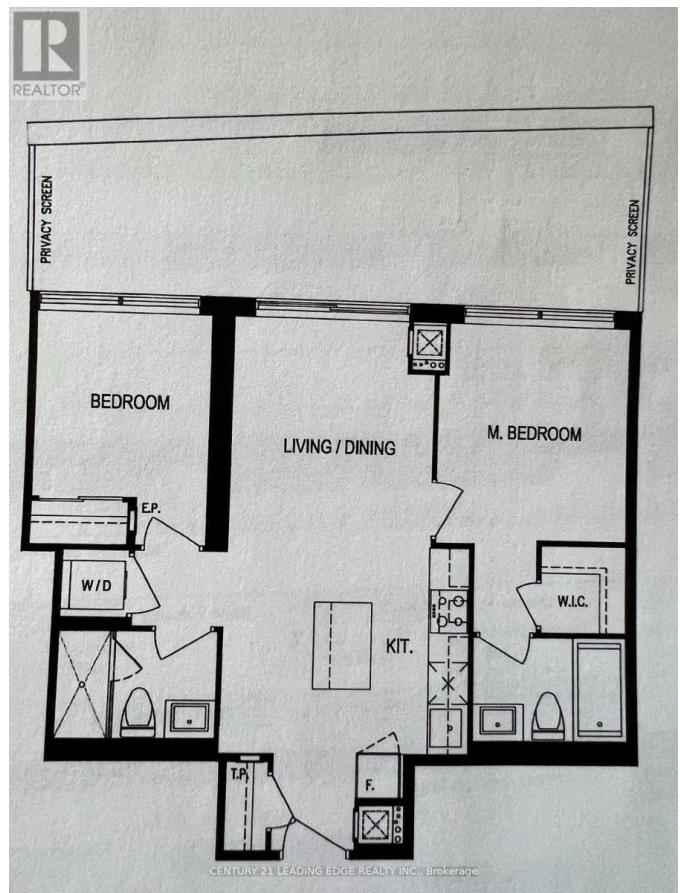


**\$3000.00 / Monthly**

2 Bedrooms, 2 BathroomsSingle Family

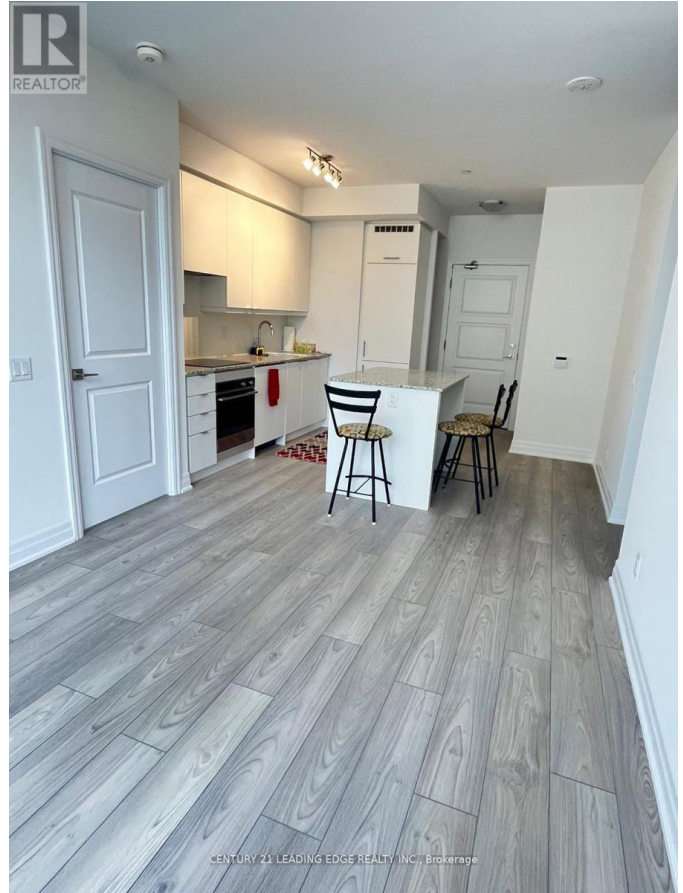
#507 -36 ELM DR W, Mississauga,  
Ontario, L5B0N3

Excellent Location. Luxury Condo unit in Mississauga, 2 bedroom, 2 bathroom w/9''' ceiling, Bright & Spacious North Exposure.Laminate floor throughout the unit, Open Concept Kitchen w/Quartz Countertop, backsplash. High end inter-grade appliances. Close toSquare One shopping Mall, Sheridan College, Public Transit, YMCA, Central Library and all amenities. \*\*\*\* EXTRAS \*\*\*\* All Electric Light Fixtures, Intergrade Fridge, Stove, B/I Dishwasher, Range hood , Washer & Dryer, all Window Covering, Included 1Underground Parking and 1 Locker (id:54154)



# \$3000.00 / Monthly - #507 -36 ELM DR W

---



MLS®, REALTOR®, and the associated logos are trademarks of The Canadian Real Estate Association

Data Provided by: Toronto Regional Real Estate Board

Last Modified: 07/05/2024 10:40:32 AM

Listing Office:CENTURY 21 LEADING EDGE REALTY INC.