

\$2750.00 / Monthly - #516 -220 MISSINNIHE WAY

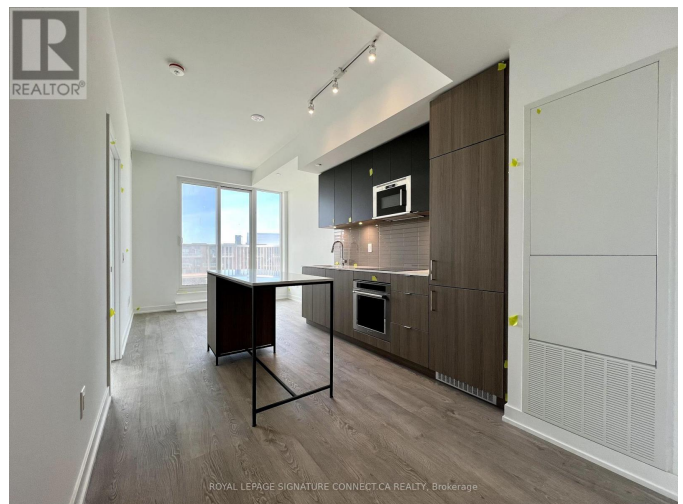
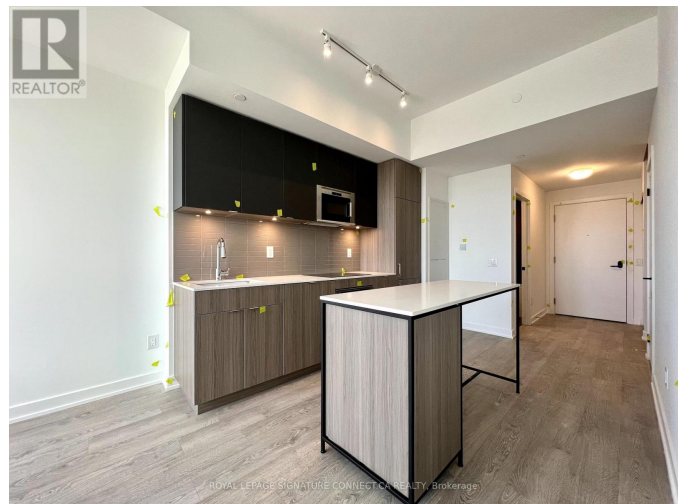
Listing ID: W8113316

\$2750.00 / Monthly

2 Bedrooms, 2 Bathrooms Single Family

#516 -220 MISSINNIHE WAY,
Mississauga, Ontario, L5H0A9

Be the first to live at Brightwater, Port Credit's most anticipated waterfront community! This well designed 1+1 offers 10 Ft Ceilings, 2 full bathrooms, a Stone Kitchen Island, In Suite Laundry + a Huge sunny balcony. Upgraded glass shower door in master ensuite. Separate Den can easily fit an second bed. Bonus: 1 EV parking spot, locker and Rogers High speed internet Included! Enjoy The Conveniences Of Living In Mississauga's most Thoughtfully Designed Master Planned Community With Everything You Need At Your Doorstep From Grocery Stores To Coffee Shops, Restaurants. Enjoy The Outdoors? You Are Minutes From The Stunning Waterfront W Tons Of Trails To Walk And Bike Along! Residents Benefit From A Free Community Shuttle To The GO Station! **** EXTRAS **** EV PARKING INCLUDED + Locker! Internet included! 5 Star Amenities Include: Fitness Centre, Co-Working Space, Sauna, Rooftop Lounge, Open Air Swim Spa, Sundeck, BBQ's, Party Rooms + More! (id:54154)



MLS®, REALTOR®, and the associated logos are trademarks of The Canadian Real Estate Association

Data Provided by: Toronto Regional Real Estate Board

Last Modified: 03/04/2024 12:49:22 AM

Listing Office:ROYAL LEPAGE SIGNATURE CONNECT.CA REALTY