

# \$3200.00 / Monthly - #402 -220 MISSINNIHE WAY

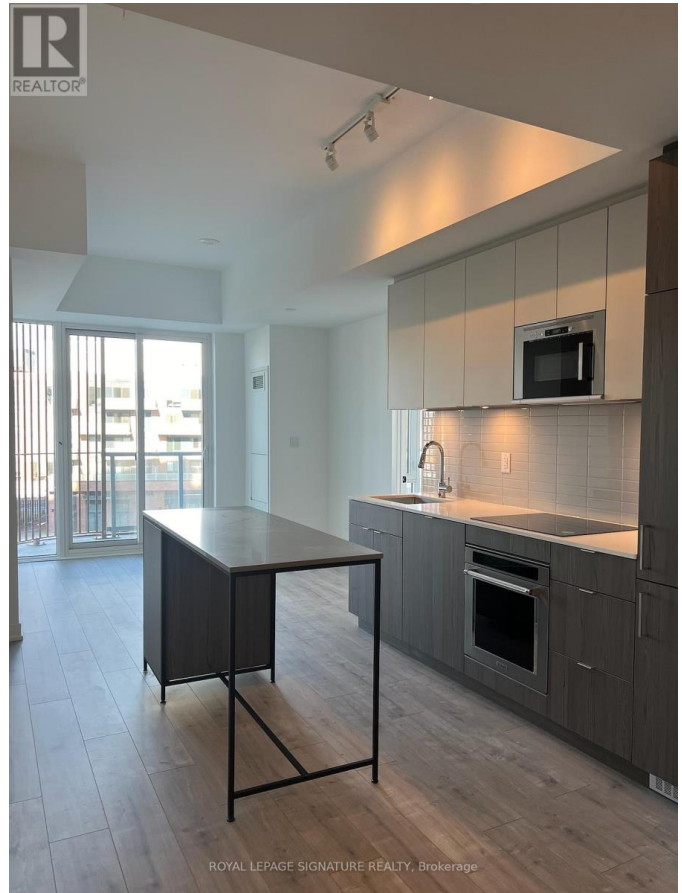
## Listing ID: W8080506

**\$3200.00 / Monthly**

3 Bedrooms, 2 Bathrooms Single Family

#402 -220 MISSINNIHE WAY,  
Mississauga, Ontario, L5H0A9

Experience luxury living at Brightwater II! This brand-new 2 Bedroom+Den unit offers modern elegance and convenience in the prestigious waterfront district of Port Credit. With floor-to-ceiling windows flooding the space with natural light and upscale finishes, this condo boasts an inviting ambiance. The gourmet kitchen features stainless steel appliances, granite countertops, and a sleek island perfect for entertaining. The primary bedroom includes a luxurious ensuite and access to balcony. Plus, parking and a locker are included for added convenience. Situated in the vibrant Brightwater community, enjoy easy access to parks, trails, and the Port Credit village. Explore local highlights like the bustling Lakeshore Road with its charming shops and restaurants, scenic Waterfront Trail, and the vibrant Port Credit Harbour Marina. Experience waterfront living at its finest - schedule your viewing today! \*\*\*\* EXTRAS \*\*\*\* 1 Parking Space and 1 Locker (id:54154)



# \$3200.00 / Monthly - #402 -220 MISSINNIHE WAY

---



MLS®, REALTOR®, and the associated logos are trademarks of The Canadian Real Estate Association

Data Provided by: Toronto Regional Real Estate Board

Last Modified: 03/04/2024 12:44:41 AM

Listing Office:ROYAL LEPAGE SIGNATURE REALTY