

\$1,499,000 - #PH10 -1055 SOUTHDOWN RD W

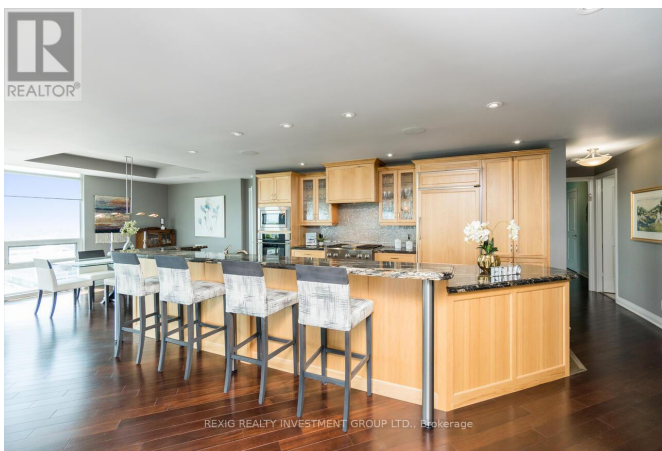
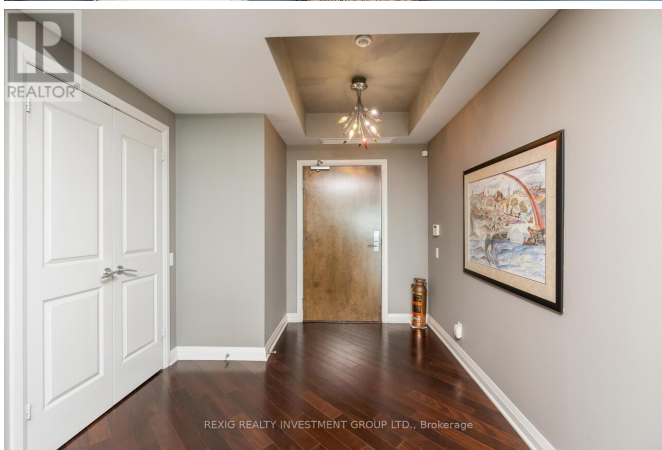
Listing ID: W8053308

\$1,499,000

3 Bedrooms, 3 Bathrooms Single Family

#PH10 -1055 SOUTHDOWN RD W,
Mississauga, Ontario, L5J0A3

Stunning penthouse offered for the very first time! This immaculate suite offers over 2400 square feet of living space. Over sized living room with Brazilian hardwood, gas fire place, built-in speakers and surrounding floor to ceiling windows. Chef's kitchen boasting hickory cabinetry, large island, indoor grill and gas stove with warming drawer. Luxurious Master w/ 5 piece en suite and walk-in closet. Gorgeous views of the lake and escarpment from 2 private balconies. Fully accommodates wheelchair accessibility. Large custom locker and 2 conveniently located side by side parking spots. This suite must be seen!! **** EXTRAS **** Penthouse Upgrades, Custom Kitchen, Gas Fireplace, Over 2400 Sq Ft of Living Space, Steps To The Go, The Village, All Shops & Amenities. (id:54154)



MLS®, REALTOR®, and the associated logos are trademarks of The Canadian Real Estate Association

Data Provided by: Toronto Regional Real Estate Board

Last Modified: 21/04/2024 08:00:46 AM

Listing Office: REXIG REALTY INVESTMENT GROUP LTD.